

Rights and Responsibilities of Dog Owners

INSIDE THIS ISSUE:

| | |
|-----------------------------|-----|
| Rights of Dog Owners | 1 |
| New Commands | 1,3 |
| Grooming for good health | 2-3 |
| Animals at the War Memorial | 4 |
| Snow Dogs | 5 |
| State Dog Sport Trials | 5 |
| CDC Diary | 5 |
| CDC Application Form | 6 |

For our May Walk and Talk at KCC Park Sheree McClelland from Frankston City Council came along to talk about the subject of the Rights and Responsibilities of Dog Owners.

One important concept we discussed was that of "effective control", a phrase often used by councils.

Effective control, of course, means that you have full control over your dog at all times. In many cases this simply means that your dog needs to be on lead. However, in designated off-lead areas this means that your dog must return to you as soon as you call it. If you don't have that sort of



Sheree (centre) answers Companion Dog Club members' questions about dog owners' rights.

control over your dog then you should not have your dog off lead in public places.

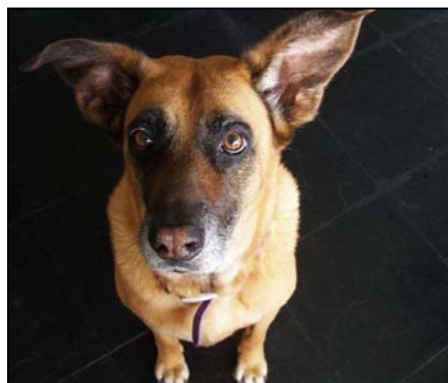
Dog owners have the same right to use public spaces as

anyone else. Both owners and non-owners must be respectful and courteous to successfully share these spaces.

Training Tip - Old Dog, New Commands

The Companion Dog Club will be reprinting a series of training tips from the AKC magazine "Family Dog" in each of the 2009 quarterly newsletters.

This article was written with a focus on training



adopted adult dogs, but we believe these are great lessons that apply across the

board whether you have just adopted an adult dog, purchased a puppy or just have a dog that could use a bit of extra training.

From the January/February issue of Family Dog, written by Kathy Santo and reprinted here courtesy of the AKC:

Have you hesitated to adopt an adult dog because you wonder how - or if - an

(Continued on page 3)

Beyond Beauty: Grooming For Good Health

By Eve Adamson, courtesy of the AKC

You already know that grooming makes your dog look lovely and smell sweet. But grooming is also one of the most important things you can do to maintain your dog's good health. Regular grooming is a bit like a light version of a veterinary exam. That makes it extra important, not just for keeping your pup pretty but as the best possible way for you to establish what's physically normal for your dog. Every time you put comb to coat, you have the chance to assess your dog's ongoing health and detect any sudden changes in skin, coat, eyes, ears, nose, rear, paws, nails, joints, or generalised pain. If anything changes, you'll be the first to notice.

Once-over rubdown

An all-over rubdown is a great way to begin every grooming session. It loosens dead coat, increases circulation in the skin, relaxes your dog for grooming – and it's also an important skin check. Lumps, bumps, rough patches, sores, or bare spots in the coat may be missed if you aren't actually putting your hands on your dog in a methodical way. This is also an excellent way to determine whether



An all-over rub down is a great way to begin a grooming session.

your dog has picked up ticks or fleas.

The once-over will alert you to other changes too. If your dog has a sore knee, hip, elbow, or shoulder, he may flinch or yelp in pain when you touch or rub him in that particular spot. If you find a lump, a sore spot, a bare patch, or anything else unusual and new, let your veterinarian know. Please don't balk at telling the vet about a lump or bump because you're afraid it might be cancer. It may be just a harmless, benign cyst. Or if it is, for example, a mast cell tumor – a common type of cancer that often manifests as a bump on the skin – early detection and treatment almost always result in complete recovery.

Orifice inspection

It may not be the most pleasant chore, but gazing into your dogs' eyes - and ears, nose, mouth, and rear end - is also an important part of a grooming health check. Problems often show up in these sensitive areas. Yeasty ear infections, gum disease, tooth decay, dry eye, impacted anal glands, even worms, are just some of the conditions that can be spotted visually. Call your vet if you notice any of the following:

- Red, rashy ears
- Excessive ear hair, clumps of wax
- Runny nose
- Foul breath
- Red, infected areas on gums
- Tartar on teeth
- Loose or broken teeth
- Red, irritated eyes
- Excessively runny, watery eyes, or tearstains under eyes
- Redness, rash, or sores
- Foreign matter like flea dirt, tiny worms, (or anything unusual)



As you brush, feel your dog's skin.

Now hair this!

After checking your dog thoroughly, the next step in regular grooming is usually brushing or combing the coat. If you have a long-coated breed, this very important step can help you spot skin problems you might not be able to detect with your hands. Don't just brush the top layer of hair: if your dog is having any kind of skin problem, it will be down at the roots, so that's where you have to look. Combing all the way down to the skin can reveal hot spots and skin infections hidden under mats and tangles. You might also find evidence of fleas or a tick.

Regular brushing can also be a great way to assess a short-coated dog's overall health. As you brush, feel and examine the state of your dogs' skin and coat. Is the skin smooth and supple, or dry and flaky? Is the coat soft and shiny, or dry and brittle? If your dog is eating a healthy, high-quality diet with sufficient essential fatty acids, his skin and coat should be in great condition. If you notice they are not, talk to your veterinarian. Sometimes, the very first sign of a health problem is as subtle as a dried-out coat and flaky skin.

(Continued on page 3)

New Commands (continued)

(Continued from page 1)



Use *relax* instead of *down* and *wait* instead of *stay*.

older dog can be trained? Or do you already have an adult dog who's just never gotten the hang of obedience commands?

Here's good news: You *can* teach an old dog new tricks.

Old Dog, New Commands

You say *come* but your dog doesn't. You say *sit*, and nothing happens. You scoff at the idea that *stay* could ever be in your dog's repertoire, and the thought of him ever lying down because you asked him to gives you the giggles (or makes you weep).

You are not alone.

You can successfully teach your dog to do all those things, and many more, but you'll get further, faster, if you teach them with different commands than the ones he's learnt to ignore.

Here can replace *come*. *Wait* is the new *stay*. Try *relax* for *down*. And how about a cheerful *let's go!* instead of a stern *heel!*

If you know another language - or have always wanted to learn one - translate those English commands to your language of choice.

Of course, simply changing the word won't teach your dog the meaning of it, but you will be starting with a

clean slate. It's easier to teach a dog a new cue word than it is to teach him a new meaning for an old word. Starting from scratch and instilling positive associations (and owner consistency) with a new cue will accelerate the learning process.

If you think there is room in your life for an adult rescue dog, visit the [CDC Adoption Directory](#).



Try using *let's go!* instead of *heel!*

Grooming for Good Health (continued)

(Continued from page 2)

Behaviour assessment

Beyond the actual hands-on aspects, grooming is also a special time to tune in to and bond with your dog. When you're busy all day, it can be easy to miss subtle signs that your pet's not feeling well. The best way to assess his behaviour during grooming is to minimise distractions. Turn off the television, the radio, the computer. Let grooming be the time when you focus on

your dog, and nothing else. Without the normal distractions of life you may realise you've been noticing behavioural changes for a while, without really registering them.

Vets say their clients are often the first ones to spot the signs of health problems

Think about whether he's been eating and drinking as usual, playing in the usual way, sleeping or resting more. Has he been reluctant to go on walks? Acting confused? Hiding? Scratching a lot? Dragging his rear end around the carpet?

Limping? Following you around more closely than usual, or not following you around in the usual way? Each of these may – or may not – be a sign that your dog is experiencing the beginning stages of a health problem.

Veterinarians have often told me their clients were the first ones to spot the signs of serious health problems, such as cancer, skin infections, and even neurological conditions; in many cases, the pet owner spotted the first signs during a grooming session. You are the expert on your dog because you see him every day. Groom him daily, or at least weekly, so that if your dog does develop a healthy problem, you'll catch it and can have it treated.

Roff the Dog at the Australian War Memorial

THE ANIMALS IN WAR MEMORIAL

The Minister for Veterans' Affairs, the Hon Alan Griffin, unveiled the Animals in War memorial on Thursday, 21 May.



Courtesy of the Australian War Memorial

The Animals in War memorial honours those animals that served alongside Australians in all conflicts: horses, dogs, donkeys, camels and pigeons performed many essential duties, such as transport, tracking and carrying messages.

The memorial itself incorporates a large bronze horse head, the only remaining fragment from the original Desert Mounted Corps memorial, destroyed by rioters during the Suez Crisis.

A IS FOR ANIMALS

A is for Animals offers an A to Z of animals in war, from mascots and messengers to creepy-crawlies.

Animals are put to many uses in war. Sometimes they have jobs to do, are used as mascots and pets, or are symbols on badges and flags.

This exhibition also looks at the unwelcome animals that make life in the field even more difficult and dangerous.

A is for Animals is open from Fri, 27 Feb – Wed, 22 July 2009.

ROFF ON DISPLAY

The Australian War Memorial's latest exhibition, *A is for Animals* will see the return of Roff the German messenger dog.

"Roff was displayed in 1941 when the Australian War Memorial first opened and has been seen by generations of visitors to the Memorial. To ensure Roff's long term preservation, he is now only occasionally displayed so *A is for Animals* is an opportunity for the next generation to view Roff," Assistant Dir. Helen Withnell said.

"There was an element of one-upmanship in luring the Germans' dog across to our line and keeping him as a trophy. Everyone loves the story, but Roff is also a very sleek looking Doberman.

"Unfortunately Roff died in October 1919 in quarantine, before he could make the trip to Australia. He still made the trip to Australia, but only after he was stuffed and mounted in London," Ms Withnell said.

ROFF'S STORY

On 3 May 1918, Corporal M Roach and Private R Conway of C Company, 13 Battalion AIF, who were in an

advanced post in trenches outside Villers-Bretonneux, France, enticed a German message dog into their lines. The dog had a message on its collar when it was captured, which was quickly removed and sent to headquarters for translation, but the dog escaped.

It was recaptured shortly afterwards by D Company. The message he carried was from a German platoon commander in the front-line, complaining that his men were tired and had not had food for 48 hours. His company commander had folded it back and written; *'Weber has been in longer than you, and he does not complain. We will send you food tonight. Give Roff any further messages. He does not complain.'*

'Roff' remained with the unit as a mascot from May to September, attached to the Quartermasters Stores.

Roff fell ill in British quarantine and died on the night of 14-15 Oct 1919. A couple of days later it was decided to have him stuffed and mounted. This was completed on 26 Nov 1919 and he was sent to Australia, where he was displayed at the War Museum in Sydney during the 1920s.



Roff, Courtesy of the Australian War Memorial

Cool Canines at the Snow

The [Alaskan Malamute Club of Victoria](#) holds sledding events throughout the winter months.

Although most Aussie sledding is done on dirt, the annual snow race at Dinner Plain on **Saturday and**

this event unless you are competing, but can come along to watch Alaskan Malamutes, Siberian Huskies and even some unexpected breeds dashing through the snow. Labrador Retrievers and Rhodesian Ridgebacks have been spotted before at Malamute Club events!



Sunday, 8-9 August is the time to see this northern breed really shine.

You can't bring your own dog to

Contact the Alaskan Malamute Club for more information on this event.

For more doggy events, visit the [Companion Dog Club Diary](#) online regularly.

State Dog Sport Trials

If you've ever wanted to watch Agility, Herding, Obedience or other dog sports but weren't sure where to start, then don't miss the many State Trials being held over the next few months including:

- State Obedience Trial and Top Obedience Dog **Sat, 1 August**
- State Herding trials **Sat - Sun, 8-9 August**
- State Tracking Trial **Sat - Mon, 29-31 August**
- State Agility Trial **Sat, 5 September**
- State Spaniel & Retriever Trial (pictured) **Sat, 12 September**

The state trials will feature some of the best dogs in Victoria at every level in their respective discipline. Please do not bring your own dog to these trials as they can be a distraction to the competing dogs.

If you are interested in these sports please contact DOGS Victoria or visit at www.dogsvictoria.org.au.

Some sports are breed-specific and some are open to all types of dog.



KCC Park Walk & Talk, 655 Westernport Hwy, Skye, 6:30pm
Feeding your dog an organic diet

Thursday, 25 June

Phillip Island Walk & Talk, Rhyll Fishing Park, Rhyll, 6:00pm
Topic TBD

Friday, 3 July

KCC Park Walk & Talk, 655 Westernport Hwy, Skye, 6:30pm
Introduction to Agility, K9 Agility Club

Thursday, 28 July

Phillip Island Walk & Talk, Rhyll Fishing Park, Rhyll, 6:00pm
Topic TBD

Friday, 7 August

BIG DAY OUT FOR DOGS - ALL DOGS WELCOME - FREE TO ATTEND ALL DAY FROM 10:30am - KCC PARK (STATE DOG CENTRE)

Sunday, 13 December

CDC DIARY

What is the Companion Dog Club?



The club provides pedigree and non-pedigree dogs and their owners with a club that will promote and appreciate the uniqueness of all types and breeds of dogs. It also recognises that each one of our canine friends is in a class of its own and is a companion in its own right.

As a member of the Companion Dog Club you and your dog will receive a number of benefits that encourage responsible dog ownership and welfare from within your own community.

The Companion Dog Club is an initiative of DOGS Victoria.

DOGS Victoria



KCC Park
655 Westernport Hwy
Skye VIC 3977

Phone: 03 9788 2500
E-mail: office@dogsvictoria.org.au

Promoting Responsible Dog Ownership

Victorian Canine Association Inc.—Trading as DOGS Victoria
Locked Bag K9, Cranbourne, 3977 Telephone: 03 9788 2500 Website: www.dogsvictoria.org.au

Application Form

Name: _____

Address: _____

Suburb: _____ Post Code: _____

Ph: _____

Mob: _____

Email: _____

Dog's Name & Breed _____

Dog's Name & Breed _____

Referred By _____

Breeder's Kennel Prefix and/or DOGS Victoria membership number, if applicable

Proudly sponsored by:



For only \$25.00 including GST, you and your family can become members of the Companion Dog Club. Yes, the \$25.00 covers everyone in your family AND you can include as many dogs as there are in your household!

\$25 (GST incl.) Payment can be made by Cheque, Money Order, Visa or MasterCard (Cash accepted in person only)

Name on Card: _____

Card No: _____

Expiry Date: _____

Signature: _____

Refer a friend to the club and receive a special gift from Purina. Be sure they put your name in the "Referred by" section.